

FIFTY

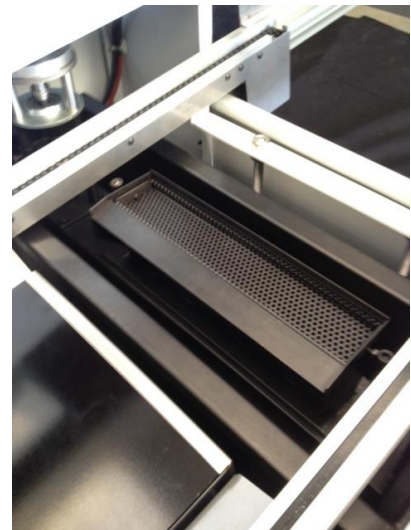
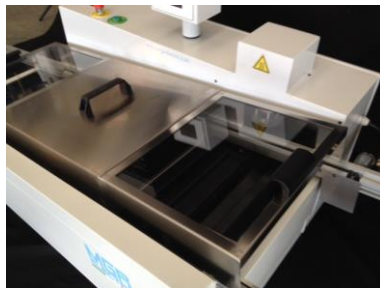
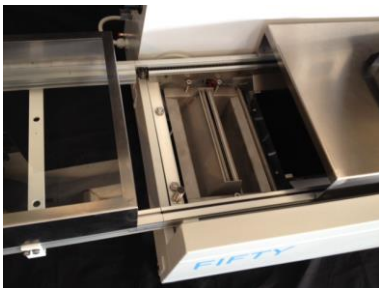
Lead-free solder wave machine



FIFTY soldering machine has been created by MGR ELECTRO to be used for the soldering of electronic components on printed circuit boards with PTH/SMD technology both for lead containing and lead-free alloys.

This small footprint solder wave machine has the same functional characteristics that are found on much larger equipment despite FIFTY having the lowest capacity soldering pot on the market (the solder pot contains “only” 50kg of lead free alloy).

FIFTY has been designed for companies that haven't very high-volume production but require the same quality, low initial investment, low cost of ownership, high process flexibility and reduced heat up time to begin production.

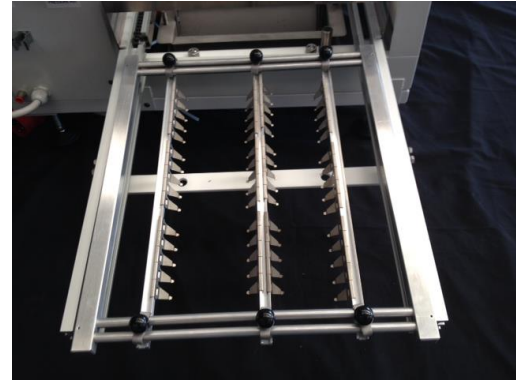




FIFTY is managed by a very practical PLC through which you can set any parameter of the machine. This PLC may recall up to 20 stored programs.

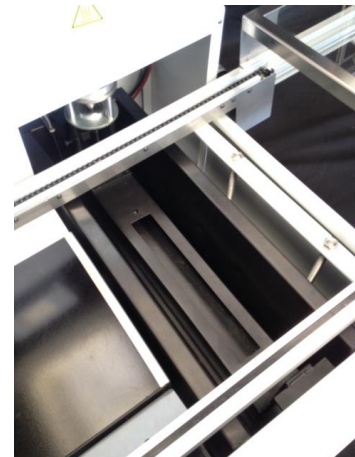
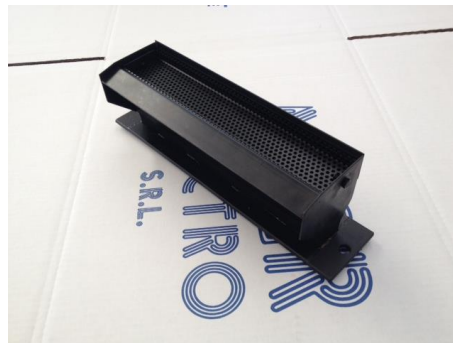
The Soldering Machine uses a solder frame system to process the circuit board that have to be soldered.

FIFTY standard version has the foam fluxing (with porous stone), while there is an optional kit called SPRAY FLUX if the customer wants to adopt this technology.



Preheating is performed by an IR panel protected by a PYREX glass and through the PLC the circuit board to be soldered can be stationary in the preheating zone for up to 90 seconds or run in continuous mode for faster production.

The solder pot contains "only" 50kg of lead free alloy, it is lead free treated and has been designed for ease of cleaning and maintenance.



TECHNICAL FEATURES:

MACHINE BODY DIMENSIONS	: 1400(L) x 700(W) x 600(H) mm
ASSEMBLED MACHINE DIMENSIONS	: 2000 mm
UNLADEN WEIGHT	: about 90 kg
FULL LOAD WEIGHT	: about 140 kg
MELTING POT POWER	: 2,5 KW
PREHEATING POWER	: 3,2 KW
TOTAL POWER	: 5,6 KW
POWER SUPPLY	: 380 V three-phase with neutral
WORKABLE PCB DIMENSIONS	: 260(W) x400(L) mm
WARM UP	: about 80 minutes